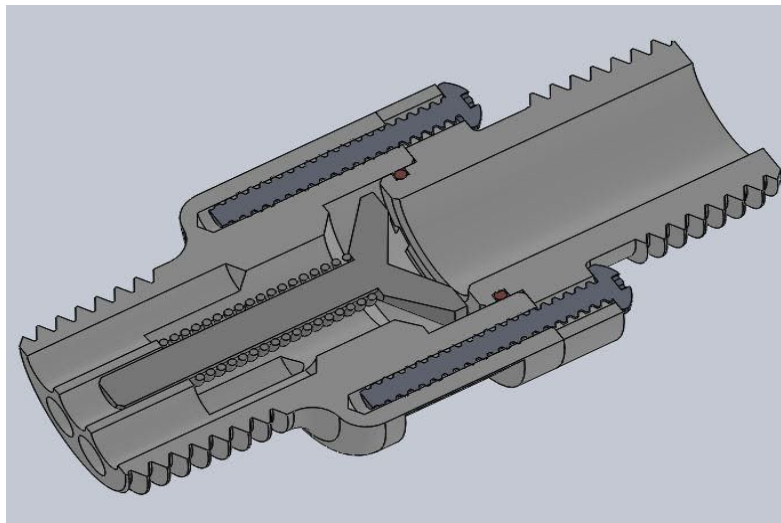
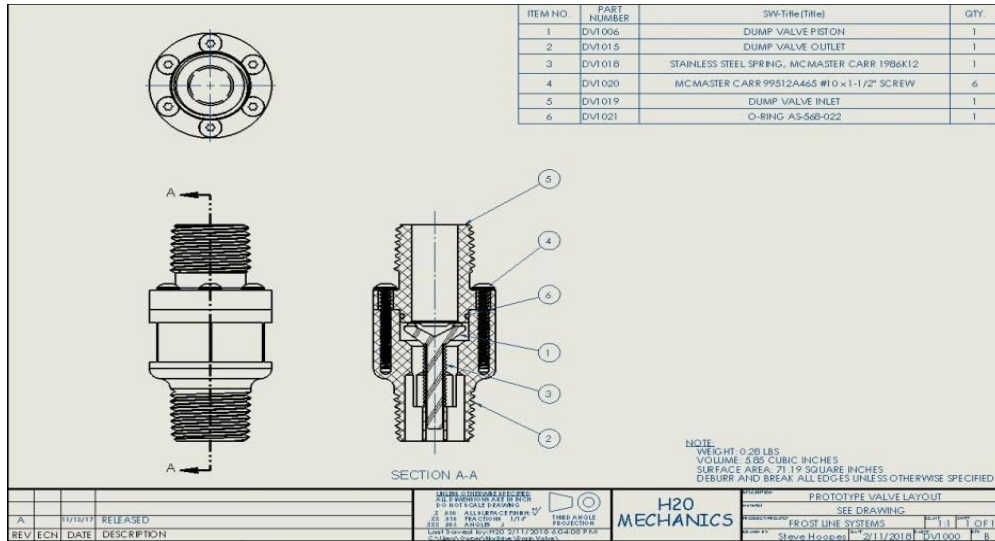




## NEW PRODUCT ANNOUNCEMENT

Fully automatic HF-DBV (**high flow drain back valve**)

This new valve was created for irrigation/sprinkler lines that need to drain out completely so they don't freeze. During severe cold weather it is necessary to drain distribution lines as fast as possible to eliminate freezing of components that could possibly be damaged. The new valve does a great job of allowing drain back to the tank once the pump cycle is completed. The current valve works well with high flow pumps (submersible) with flow rates in excess of 10 gallons and a static head in the 150-250 feet range



The valve operates totally off head pressure and is extremely versatile. You can install the valve downhill from your effluent tank (pump tank) and it will perform the drain function of the lines when the pump cycle is complete. The self-threading screws denote the inlet side of the valve and the ported end is the outlet. Please see the example below of a typical pump tank that shows the recommended position of the drain back valve. When you are assembling the valve (position) make sure you can retrieve it

easily should you need to clean it or service it for any reason. If this valve interests you, please contact H2O Mechanics LLC.

